

347. Axle Differential Assembly

| Fig. No. | Ref. letter | Point of measurement | Sizes and fits of new parts |
|----------|-------------|---|-----------------------------|
| 248 | J-K | Drive gear to drive pinion backlash... | 0.005 to 0.008 |
| 248 | A | Diameter of side gear pilot in case and case cover. | 2.193 to 2.195 |
| 248 | B | Thickness of side gear thrust washers. | 0.058 to 0.062 |
| 248 | C | Diameter of side gear pilot..... | 2.189 to 2.191 |
| 248 | D | Diameter of spider pinion bore..... | 0.880 to 0.881 |
| 248 | F-D | Fit of spider arm in spider pinion.... | 0.005L to 0.007L |
| 248 | E | Thickness of spider pinion thrust washer. | 0.058 to 0.062 |
| 248 | F | Diameter of spider arms..... | 0.874 to 0.875 |
| 248 | G | Thickness of thrust pad..... | 0.1845 to 0.1885 |
| 248 | H | Outside diameter of flange sleeve.... | 2.599 to 2.601 |

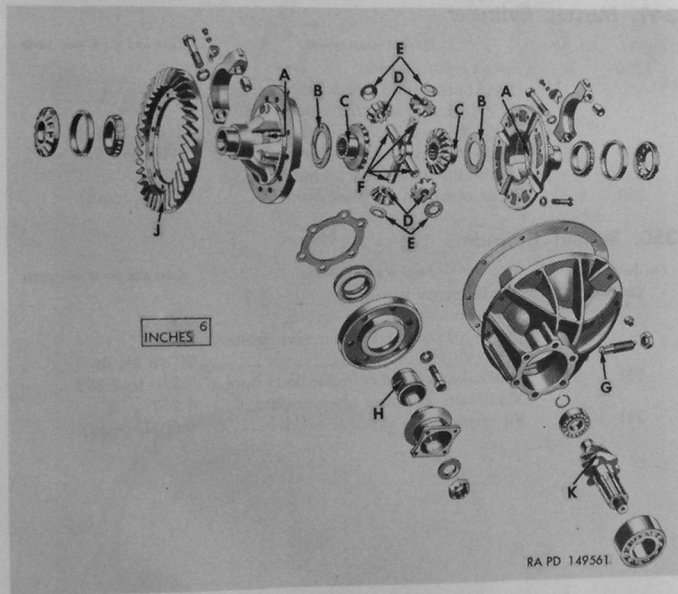


Figure 248. Repair and rebuild standard points of measurement for axle differential assembly.

348. Service Brakes

| <i>Fig. No.</i> | <i>Ref. letter</i> | <i>Point of measurement</i> | <i>Sizes and fits of new parts</i> |
|-----------------|--------------------|---|------------------------------------|
| 249 | A | Backing plate flange—runout not to exceed (total dial indicator reading)----- | 0.010 |
| 249 | B | Diameter of anchor pin----- | 0.866 to 0.868 |
| 249 | C | Diameter of anchor pin bore in anchor block----- | 0.877 to 0.879 |
| 249 | B-C | Fit of anchor pin in anchor block----- | 0.009L to 0.013L |
| 249 | D | Brake shoe return spring: | |
| | | Free length----- | 5 $\frac{1}{16}$ |
| | | Working load when compressed to 5 $\frac{1}{16}$ ----- | 50 to 60 lb |

349. Master Cylinder

| <i>Fig. No.</i> | <i>Ref. letter</i> | <i>Point of measurement</i> | <i>Sizes and fits of new parts</i> |
|-----------------|--------------------|--|---|
| 250 | B | Piston return spring: | |
| | | Approximate free length----- | 4 $\frac{11}{16}$ |
| | | Working load when compressed to 2 $\frac{3}{8}$ in.----- | 11 $\frac{1}{4}$ to 12 $\frac{1}{4}$ lb |
| 250 | C | Inside diameter of cylinder bore----- | 1.750 to 1.753 |
| | | Maximum diameter after honing----- | 1.757 |
| 250 | A-C | Fit of piston in cylinder bore----- | 0.005L (max) |

350. Wheel Cylinders

| <i>Fig. No.</i> | <i>Ref. letter</i> | <i>Point of measurement</i> | <i>Sizes and fits of new parts</i> |
|-----------------|--------------------|---|---------------------------------------|
| 251 | B | Piston return spring: | |
| | | Approximate free length----- | 2 $\frac{7}{8}$ |
| | | Working load when compressed to 1 $\frac{3}{8}$ ----- | 2 $\frac{1}{4}$ to 3 $\frac{1}{4}$ lb |
| 251 | C | Inside diameter of cylinder body bore----- | 1.250 to 1.253 |
| | | Maximum diameter after honing----- | 1.257 |
| 251 | A-C | Fit of piston in cylinder body bore--- | 0.005L (max) |

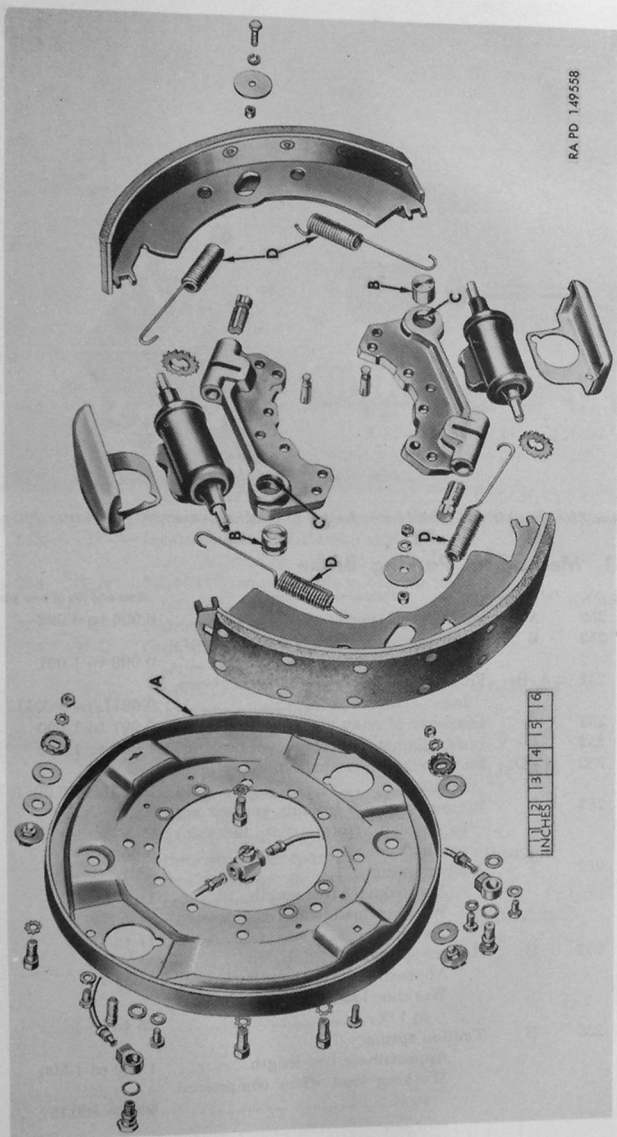


Figure 249. Repair and rebuild standard points of measurement for service brakes.

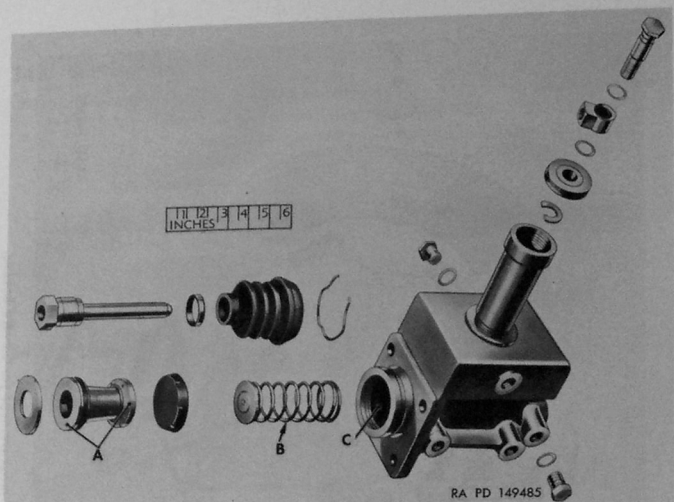


Figure 250. Repair and rebuild standard points of measurement for master cylinder.

351. Mechanical Parking Brake

| Fig. No. | Ref. letter | Point of measurement | Sizes and fits of new parts |
|----------|-------------|--|-----------------------------|
| 252 | A | Diameter of special pin..... | 0.996 to 0.998 |
| 252 | B | Inside diameter of lever bracket bearing..... | 0.999 to 1.001 |
| 252 | A-B | Fit of special pin in lever bracket bearing..... | 0.001L to 0.005L |
| 252 | C | Diameter of relay lever shaft..... | 0.997 to 1.000 |
| 252 | D | Inside diameter of relay lever bearing..... | 1.002 to 1.003 |
| 252 | C-D | Fit of relay lever shaft in relay lever bearing..... | 0.003L to 0.005L |
| 252 | E | Runout of drum braking surface not to exceed (total dial indicator reading)..... | 0.005 |
| 252 | F | Anchor spring: | |
| | | Approximate free length..... | 1 $\frac{1}{16}$ |
| | | Working load when compressed to $\frac{3}{4}$ | 11 to 15 lb |
| 252 | G | Release springs: | |
| | | Approximate free length..... | 2 $\frac{1}{16}$ |
| | | Working load when compressed to 1 $\frac{1}{32}$ | 25 to 35 lb |
| 252 | H | Tension spring: | |
| | | Approximate free length..... | 1.360 to 1.390 |
| | | Working load when compressed to $\frac{1}{4}$ | 600 to 800 lb |

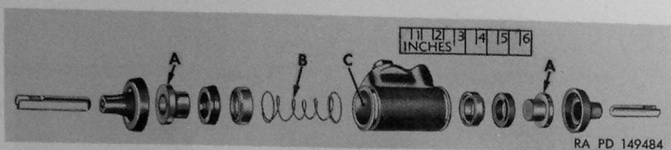


Figure 251. Repair and rebuild standard points of measurement for wheel cylinders.

352. Temporary (Electric) Parking Brake Valve

| Fig. No. | Ref. letter | Point of measurement | Sizes and fits of new parts |
|----------|-------------|--|-----------------------------|
| 178 | B | Check valve spring: | |
| | | Approximate free length..... | 1 1/16 |
| | | Working load when compressed to 1 1/32..... | 2 3/4 to 3 1/4 lb |

353. Steering Gear Assembly

| Fig. No. | Ref. letter | Point of measurement | Sizes and fits of new parts |
|----------|-------------|---|-----------------------------|
| 253 | A | Inside diameter of Pitman shaft bearing (inside cover)..... | 1.1255 to 1.1260 |
| 253 | B | Outside diameter of Pitman arm shaft..... | 1.1235 to 1.1240 |
| 253 | B-A | Fit of Pitman arm shaft in bearing (in side cover)..... | 0.0015L to 0.0025L |
| 253 | C | Outside diameter of Pitman arm shaft..... | 1.3750 to 1.3755 |
| 253 | D | Inside diameter of Pitman shaft bearing (in housing)..... | 1.379 to 1.3795 |
| 253 | C-D | Fit of Pitman arm shaft in bearing (in housing)..... | 0.0035L to 0.0045L |
| 253 | E | Diameter of balls..... | 3/32 |
| 253 | F-G | Clearance between end of adjusting screw and notch in Pitman arm shaft..... | 0.002 (max) |
| 253 | H | Shaft bearing spring: | |
| | | Free length..... | 3/4 |
| | | Working load when compressed to 1/2 to 3/8..... | 25 to 35 lb |
| | | Backlash between Pitman arm shaft teeth and worm ball nut teeth—pounds pull on steering wheel through center (par. 264d)..... | 2 1/2 to 3 lb |
| | | Worm bearing adjustment—pounds pull to keep steering wheel moving (par. 264c)..... | 1 1/2 to 2 lb. |

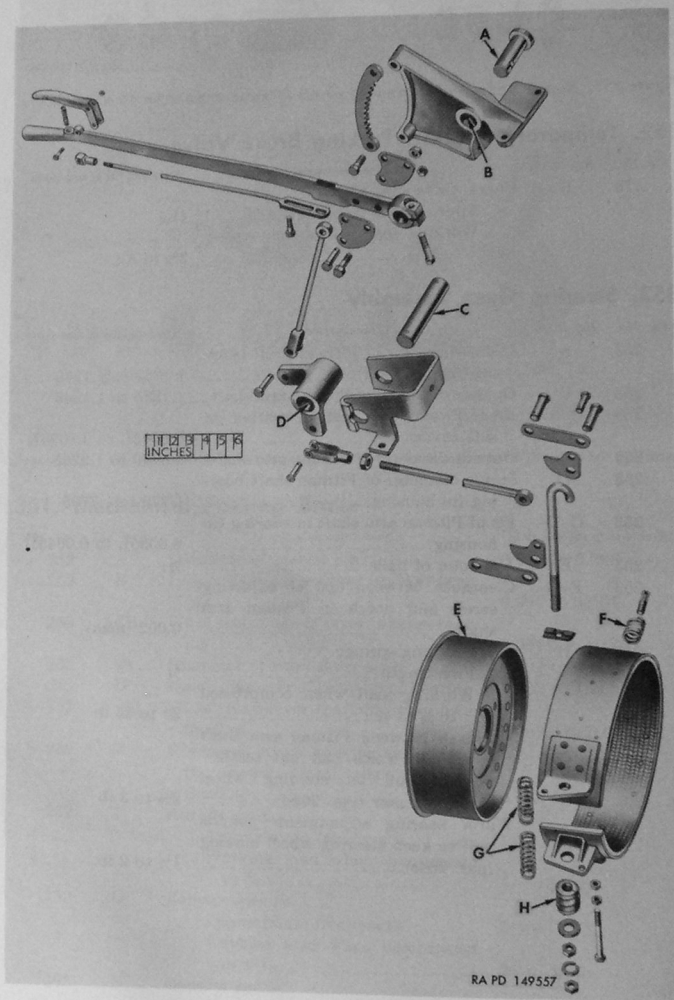
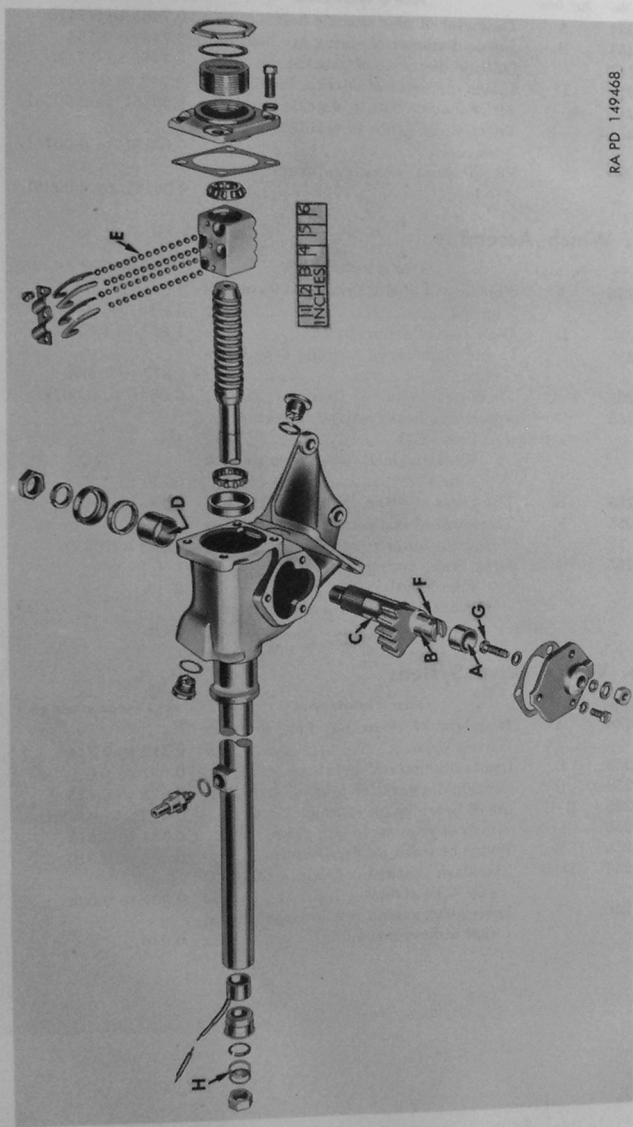


Figure 252. Repair and rebuild standard points of measurement for mechanical parking brake.



RA PD 149468

Figure 253. Repair and rebuild standard points of measurement for steering gear assembly.

354. Front Spring Suspension Components

| <i>Fig. No.</i> | <i>Ref. letter</i> | <i>Point of measurement</i> | <i>Sizes and fits of new parts</i> |
|-----------------|--------------------|--|------------------------------------|
| 254 | A | Diameter of rear shackle bolt | 0.7465 to 0.7475 |
| 254 | B | Inside diameter of spring eye bearing | 0.749 to 0.754 |
| 254 | C | Outside diameter of shackle pin | 0.7465 to 0.7475 |
| 254 | D | Inside diameter of shackle bearing | 0.749 to 0.752 |
| 254 | A-D | Fit of shackle bolt in shackle bearing | 0.0015L to 0.0055L |
| 254 | C-B | Fit of shackle pin in spring eye bearing | 0.0015L to 0.0075L |
| | | Fit of shock absorber piston in cylinder | 0.0014L to 0.0025L |

355. Winch Assembly

| <i>Fig. No.</i> | <i>Ref. letter</i> | <i>Point of measurement</i> | <i>Sizes and fits of new parts</i> |
|-----------------|--------------------|---|------------------------------------|
| 255 | A | Free length of clutch control lever ball spring | 11/16 |
| 255 | B | Diameter of drum shaft | 1.873 to 1.875 |
| 255 | C | Inside diameter of bushing type bearings | 1.877 to 1.880 |
| 255 | B-C | Fit of drum shaft in bearings | 0.002L to 0.007L |
| 255 | D | Automatic brake adjusting spring: | |
| | | Free length | 1½ |
| | | Working load when compressed to 1 | 50 lb |
| 255 | E | Thickness of drum thrust ring | 0.486 to 0.490 |
| 255 | F | Thickness of end frame bearing thrust ring (at outer edge) | 0.240 to 0.250 |
| 255 | G | Drag brake spring: | |
| | | Free length | 2 |
| | | Working load when compressed to 1 ¹¹ / ₁₆ | 48 lb |

356. Winch Drive System

| <i>Fig. No.</i> | <i>Ref. letter</i> | <i>Point of measurement</i> | <i>Sizes and fits of new parts</i> |
|-----------------|--------------------|---|------------------------------------|
| 256 | A | Diameter of shear pin hole in front fixed yoke | 0.312 to 0.314 |
| 256 | B | Inside diameter of bearings | 0.627 to 0.629 |
| 256 | C | Outside diameter of journal arms | 0.623 to 0.625 |
| 256 | B-C | Fit of bearings on journals | 0.002L to 0.006L |
| 256 | D | Width of grooves in slip yoke | 0.311 to 0.313 |
| 256 | E | Width of teeth on drive shafts | 0.308 to 0.310 |
| 256 | D-E | Backlash between drive shaft and slip yoke splines | 0.001 to 0.005 |
| 256 | F | Drive shaft runout not to exceed (total dial indicator reading) | 0.010 |

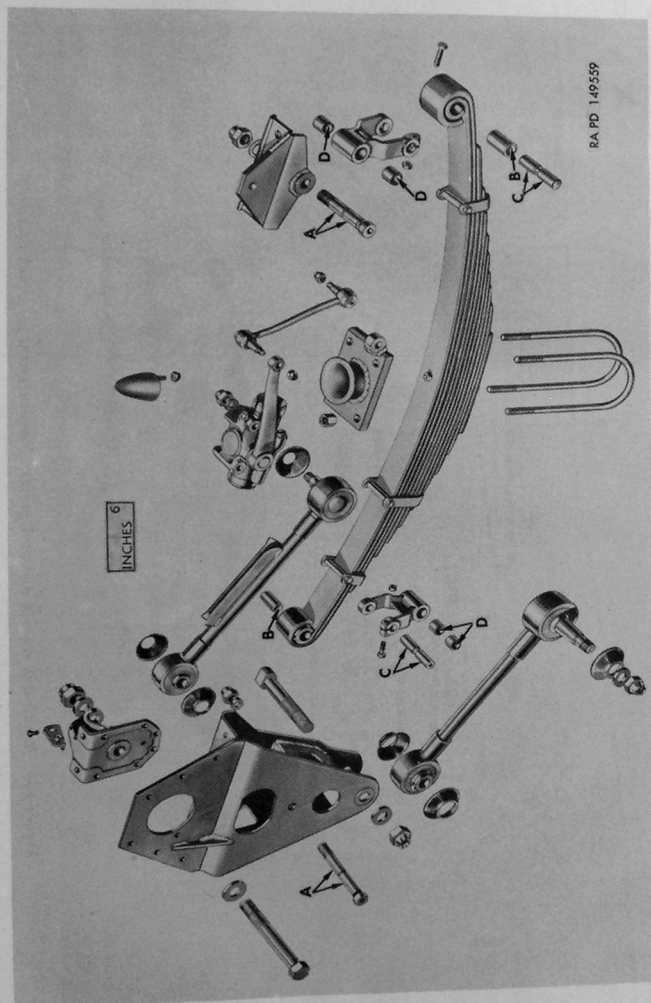
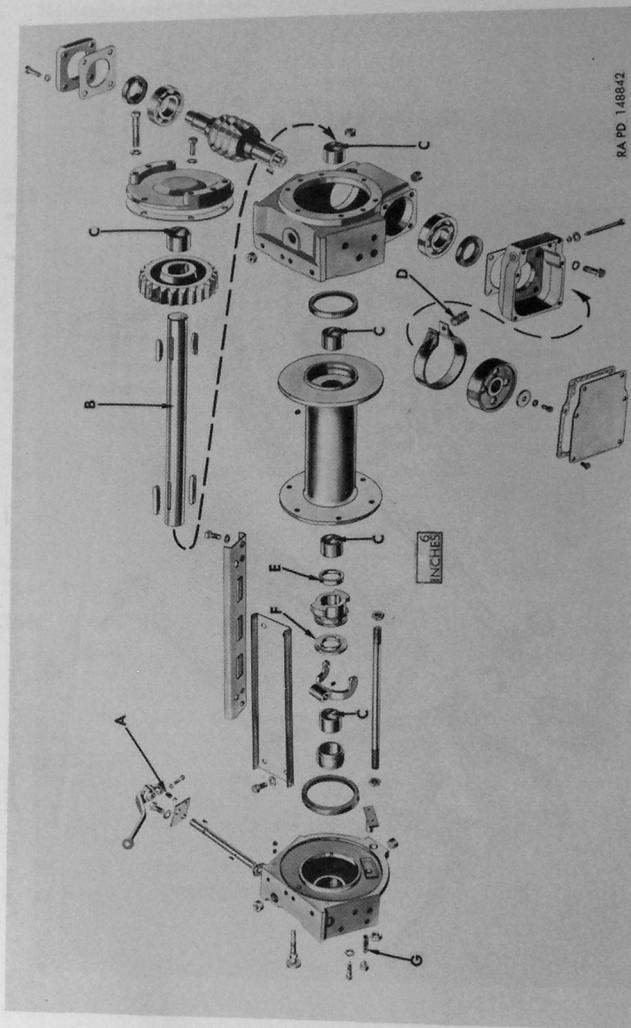


Figure 254. Repair and rebuild standard points of measurement for front spring suspension components.



RA PD 148842

Figure 255. Repair and rebuild standard points of measurement for winch assembly.

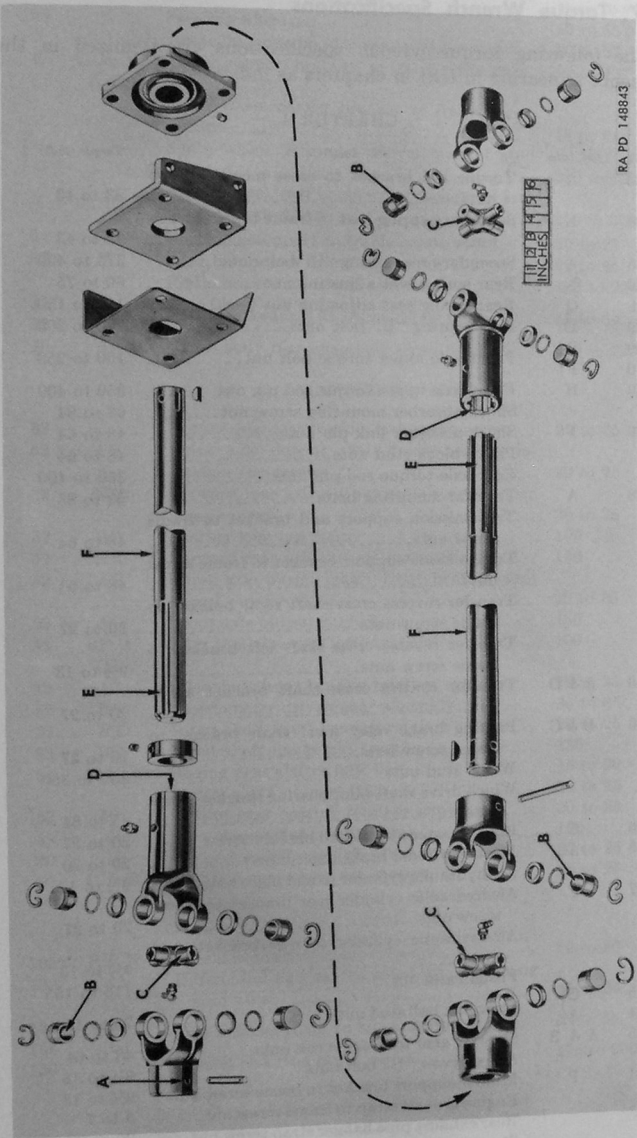


Figure 256. Repair and rebuild standard points of measurement for winch drive line components.

357. Torque Wrench Specifications

The following torque wrench specifications are itemized in the sequence appearing in text in chapters as indicated.

CHAPTER 4

| Fig. No. | Ref. letter | Location | Torque (lb-ft) |
|----------|-------------|---|----------------|
| 33 | A | Torque rod bracket to cross member screw nuts..... | 33 to 43 |
| 35 | E | Secondary spring seat to frame bracket screw nuts..... | 33 to 43 |
| 35 | A | Secondary rear spring "U" bolt nuts..... | 375 to 400 |
| 39 | N | Rear spring seat adjusting nut..... | 60 to 75 |
| 39 | Q | Rear spring seat adjusting nut (lock)..... | 100 to 150 |
| 29 | D | Front spring "U" bolt nuts..... | 170 to 200 |
| 29 | B} | Front axle upper torque bolt nut..... | 190 to 250 |
| 30 | F} | | |
| 29 | H | Front axle upper torque rod pin nut..... | 350 to 400 |
| | | Shock absorber mounting screw nut..... | 63 to 84 |
| 29 | F | Shock absorber link pin nuts..... | 48 to 64 |
| | | Pillow block stud nuts..... | 48 to 64 |
| | | Rear axle torque rod pin nuts..... | 350 to 400 |
| 28 | A | Transfer mounting bolts..... | 60 to 85 |
| | | Transmission support and bracket to frame screw nuts..... | 48 to 64 |
| | | Transmission support bracket to frame screw nuts..... | 48 to 64 |
| | | Transfer reverse cross shaft right bracket to frame screw nuts..... | 20 to 27 |
| | | Transfer reverse cross shaft left bracket to frame screw nuts..... | 9½ to 13 |
| 36 | A & D | Transfer control cross shaft bracket screw nut..... | 20 to 27 |
| 36 | B & C | Parking brake relay lever shaft bracket to frame screw nuts..... | 20 to 27 |
| | | Wheel stud nuts..... | 300 to 350 |
| | | Winch drive shaft pilot bearing bracket screw nuts..... | 48 to 64 |
| 26 | C | Brake master cylinder to bracket screw nuts..... | 20 to 27 |
| 26 | A | Master cylinder brake line connector bolt..... | 20 to 30 |
| | | Air-hydraulic cylinder to end plate bolts..... | 9½ to 13 |
| 27 | F | Air-hydraulic cylinder rear bracket to frame screw nuts..... | 20 to 27 |
| | | Air-hydraulic cylinder to rear bracket stud nut..... | 9½ to 13 |
| | | Pitman arm nut..... | 115 to 155 |
| 25 | C} | Drag link ball stud nuts..... | 75 to 100 |
| 124 | A} | | |
| 25 | A & B | Steering gear to frame screw nuts..... | 48 to 64 |
| | | Air reservoir "U" bolt nuts..... | 9½ to 13 |
| 41 | P | Muffler support bracket to frame screw nuts..... | 9½ to 13 |
| | | Engine ground strap to frame screw nut..... | 5 to 7 |
| | | Rear exhaust pipe hanger strap screw nut..... | 20 to 27 |
| | | Steering column bracket cap screw nut..... | 20 to 27 |

| Fig. No. | Ref. letter | Location | Torque (lb-ft) |
|----------|------------------|---|----------------|
| 198 | S | Steering wheel nut..... | 40 to 55 |
| | | Brake upper pedal to lower pedal screw nut... | 20 to 27 |
| 17 | A, B, C, & F. | Winch support brackets to frame screw nuts | 95 to 127 |
| | | Spare wheel carrier bracket to frame screw nuts..... | 48 to 64 |
| | | Spare wheel to carrier swivel bracket stud nuts..... | 230 to 300 |
| | | Spare wheel carrier swivel bracket to lock bracket stud nut..... | 250 to 300 |
| 24 | B | Fuel tank support to frame screw nut..... | 20 to 27 |
| 37 | A | Rear bumper to frame screw nut..... | 48 to 64 |
| | | Pinle bracket to frame screw nuts..... | 165 to 220 |
| 37 | B} | Tail light bracket to frame screw nuts..... | 48 to 64 |
| 38 | A} | | |
| 46 | D | Cargo body rear mounting screw nuts..... | 165 to 220 |

CHAPTER 5

| | | | |
|----|------------|---|----------|
| 67 | ----- | Output gear rear bearing lock sleeve screw... | 20 to 25 |
| 52 | AH | Front axle output shaft front bearing re- tainer cap screws..... | 20 to 25 |
| 52 | NN | Forward rear axle output shaft rear retainer cap screws..... | 20 to 25 |
| 52 | AS | Bearing lock nut (min)..... | 100 |
| 52 | KK | Forward rear axle output shaft (min)..... | 130 |
| 52 | AE | Front axle output shaft front bearing sup- port cap screws..... | 20 to 25 |
| 52 | AL | Front axle output shaft flange nut (min).... | 130 |
| 52 | BF & CC | Idler shaft bearing lock nuts (min)..... | 100 |
| 52 | AZ | Idler shaft front bearing retainer cap screws.. | 20 to 25 |
| 52 | BK | Speedometer driven gear assembly..... | 30 to 35 |
| 52 | BT | Input shaft front bearing retainer screws.... | 20 to 25 |
| 52 | BQ | Input shaft flange nut (min)..... | 130 |
| 54 | F | Sliding gear shifter fork bolt..... | 15 to 20 |
| | | Shifter shaft support bolts..... | 20 to 25 |
| 52 | FF | Output gear bearing retainer screws..... | 20 to 25 |
| 52 | P | Output gear flange nut (min)..... | 100 |
| 80 | B | Power take-off opening cover screws..... | 20 to 25 |
| 80 | C & B | Transfer case cover cap screws..... | 20 to 25 |

CHAPTER 7

| | | | |
|-----|-------|--|------------|
| 109 | P & N | Trunnion bearing nuts or spacers..... | 70 to 80 |
| 132 | AA | Differential and carrier assembly to housing stud nuts..... | 45 to 55 |
| 121 | E} | Axle housing cover to housing stud nuts.... | 45 to 55 |
| 148 | G} | | |
| 130 | ----- | Tie rod end stud nuts..... | 175 to 200 |

CHAPTER 8

| Fig. No. | Ref. letter | Location | Torque (lb-ft) |
|----------|-------------|---------------------------------|----------------|
| 132 | PP | Oil seal retainer cap screws | 160 to 180 |
| 132 | JJ | Drive pinion nuts (at axles) | 160 to 280 |
| 132 | W | Drive gear cap screws | 85 to 95 |
| 132 | D | Differential bearing cap screws | 130 to 160 |
| 132 | AA | Differential carrier stud nuts | 45 to 55 |
| 148 | G | Axle housing cover std nut | 45 of 55 |

CHAPTER 9

| | | | |
|-----|---|-------------------------|------------|
| 154 | A | Pillow block shaft nuts | 175 to 225 |
|-----|---|-------------------------|------------|

CHAPTER 10

| | | | |
|-----|---|---------------------------------------|----------|
| 182 | U | Brake drum to adapter stud nuts | 20 to 27 |
| 168 | G | Master cylinder filler pipe | 75 to 80 |
| 168 | N | Master cylinder filler cap bolt (max) | 30 |

CHAPTER 11

| | | | |
|-----|---|---------------------------------|------------|
| 178 | A | Parking brake valve outlet plug | 145 to 155 |
|-----|---|---------------------------------|------------|

CHAPTER 12

| | | | |
|-----|---|--|------------|
| 182 | V | Hub drive flange studs | 50 to 60 |
| 182 | D | Wheel bearing adjusting nuts | 60 to 75 |
| 182 | B | Wheel bearing adjusting nuts (lock) | 100 to 150 |
| | | Rear axle shaft or front hub drive flange stud nuts. | 55 to 65 |

CHAPTER 13

| | | | |
|-----|---|--------------------|------------|
| 198 | S | Steering wheel nut | 40 to 55 |
| | | Pitman arm nut | 115 to 155 |

CHAPTER 15

| | | | |
|-----|----|-----------------------------------|------------|
| 214 | AA | Rear spring seat shaft safety nut | 650 to 700 |
|-----|----|-----------------------------------|------------|

APPENDIX

REFERENCES

1. Publication Indexes

The following publication indexes and lists of current issue should be consulted frequently for latest changes or revisions of references given in this appendix and for new publications relating to matériel covered in this manual:

| | |
|--|-------------|
| Index of Administrative Publications..... | SR 310-20-5 |
| Index of Army Motion Pictures and Film Strips and Kinescope Recordings..... | SR 110-1-1 |
| Index of Blank Forms and Army Personnel Classification Tests..... | SR 310-20-6 |
| Index of Technical Manuals, Technical Regulations, Technical Bulletins, Supply Bulletins, Lubrication Orders and Modification Work Orders..... | SR 310-20-4 |
| Index to Tables of Organization and Equipment, Reduction Tables, Tables of Organization, Tables of Equipment, and Tables of Allowances..... | 310-20-7 |
| Index of Training Publications..... | SR 310-20-3 |
| Introduction and Index (supply catalogs)..... | ORD 1 |
| Military Training Aids..... | FM 21-8 |
| Ordnance Major Items and Major Combinations and Pertinent Publications..... | SB 9-1 |

2. Supply Catalogs

The following catalogs of the Department of the Army Supply Catalog pertain to this matériel:

| | |
|---|----------------|
| <i>a. Destruction to Prevent Enemy Use.</i> | |
| Land Mines and Fuzes, Demolition Material, and Ammunition for Simulated Artillery and Grenade Fire..... | ORD 11 SNL R-7 |
| <i>b. Repair and Rebuild.</i> | |
| Antifriction Bearings and Related Items..... | ORD 5 SNL H-12 |
| Cleaners, Preservatives, Lubricants, Recoil Fluids, Special Oils, and Related Maintenance Materials..... | ORD 3 SNL K-1 |

| | |
|--|-------------------------|
| Electrical Fittings----- | ORD 5 SNL H-4 |
| Items of Soldering, Metallizing, Brazing and Weld- ing Materials: Gases and Related Items----- | ORD 3 SNL K-2 |
| Lubricating Equipment, Accessories and Related Dispensers----- | ORD (*) SNL K-3 |
| Lubricating Fittings, Oil Filters, and Oil Filter Elements----- | ORD 5 SNL H-16 |
| Major Items and Major Combinations of Group G----- | ORD 3 SNL G-1 |
| Miscellaneous Hardware----- | ORD 5 SNL H-2 |
| Oil Seals----- | ORD 5 SNL H-13 |
| Pipe and Hose Fittings----- | ORD 5 SNL H-6 |
| Shop Set, Auto Fuel and Electrical System, Field Maintenance----- | ORD 6 SNL J-8, Sec. 12 |
| Shop Set, Contact and Emergency Repair, Field Maintenance----- | ORD 6 SNL J-8, Sec. 18 |
| Shop Set, Engine and Power Train Rebuild Company (Armament), Depot Mainte- nance----- | ORD 6 SNL J-9, Sec. 8 |
| Shop Set, Engine Rebuild Company (Auto- motive), Depot Maintenance----- | ORD 6 SNL J-9, Sec. 3 |
| Shop Set, Headquarters and Service Com- pany, Depot Maintenance, Automotive or Armament----- | ORD 6 SNL J-9, Sec. 2 |
| Shop Set, Maintenance (Field) Automotive----- | ORD 6 SNL J-8, Sec. 13 |
| Shop Set, Power Train Rebuild Company (Automotive), Depot Maintenance----- | ORD 6 SNL J-9, Sec. 1 |
| Shop Set, Tire Rebuild Company, Depot Maintenance----- | ORD 6 SNL J-9, Sec. 10 |
| Standard Hardware----- | ORD 5 SNL H-1 |
| Tool Set, Auto Fuel and Electrical System Repairman----- | ORD 6 SNL J-10, Sec. 8 |
| Tool Set, Canvas and Leather Repairman----- | ORD 6 SNL J-10, Sec. 15 |
| Tool Set, General Mechanic's----- | ORD 6 SNL J-10, Sec. 4 |
| Tool Set, Maintenance (Field), Motor Vehi- cle Assembly Company----- | ORD 6 SNL J-8, Sec. 7 |
| Tool Set, Metal Body Repairman----- | ORD 6 SNL J-10, Sec. 7 |
| Tool Set, Tire Rebuilder and Inspector----- | ORD 6 SNL J-10, Sec. 11 |
| Tool Set, Vulcanizer's----- | ORD 6 SNL J-10, Sec. 12 |
| <i>c. Vehicle.</i> | |
| Truck, Cargo, 2½-Ton, 6 x 6, M135----- | ORD (*) SNL G-749 |

*See ORD 1 for published catalogs of the ordnance section of the Department of the Army Supply Catalog.

3. Forms

The following forms pertain to this matériel :

| | |
|-------------------|--|
| WD AGO Form 9-1, | Matériel Inspection Tag |
| DA Form 9-3, | Processing Record for Storage and Shipment (Tag) and Boxed Engines |
| WD AGO Form 9-4, | Vehicular Storage and Servicing Record (Card) |
| DA Form 9-68, | Spot Check Inspection Report for Wheeled and Half-Track Vehicles |
| WD AGO Form 9-71, | Locator and Inventory Control Card |
| WD AGO Form 9-72, | Ordnance Stock Record Card |
| DA Form 9-76, | Request for Work Order |
| DA Form 9-77, | Job Order Register |
| WD AGO Form 9-78, | Job Order |
| DA Form 9-79, | Parts Requisition |
| WD AGO Form 9-80, | Job Order File |
| WD AGO Form 9-81, | Exchange Part or Unit Identification Tag |
| DA Form 447, | Property Turn-In Slip |
| DA Form 460, | Preventive Maintenance Roster |
| DA Form 461, | Preventive Maintenance Service and Inspec- tion for Wheeled and Half-Track Vehicles |
| DA Form 461-5, | Limited Technical Inspection |
| DA Form 446, | Issue Slip |
| DA Form 468, | Unsatisfactory Equipment Report |
| DA Form 478, | MWO and Major Unit Assembly Replace- ment Record and Organizational Equip- ment File |
| DA Form 811, | Work Request and Job Order |
| DA Form 811-1, | Work Request and Hand Receipt |
| WD AGO Form 865, | Work Order |
| WD AGO Form 866, | Consolidation of Parts |
| WD AGO Form 867, | Status of Modification Work Order |
| DD Form 6, | Report of Damaged or Improper Shipment |
| DD Form 317, | Preventive Maintenance Service Due (Sticker) |

4. Other Publications

The following explanatory publications contain information perti-
nent to this matériel and associated equipment :

- a. *Camouflage.*
Camouflage, Basic Principles----- FM 5-20

| | |
|--|--------------|
| Camouflage of Vehicles..... | FM 5-20B |
| <i>b. Decontamination.</i> | |
| Decontamination..... | TM 3-220 |
| Decontamination of Armored Force Vehicles..... | FM 17-59 |
| Defense Against Chemical Attack..... | FM 21-40 |
| <i>c. Destruction to Present Enemy Use.</i> | |
| Explosives and Demolitions..... | FM 5-25 |
| Ordnance Service in the Field..... | FM 9-5 |
| <i>d. General.</i> | |
| Cooling Systems: Vehicles and Powered Ground Equip- ment..... | TM 9-2858 |
| Disposal of Supplies and Equipment: Uneconomically Repairable Ordnance Vehicles..... | SR 755-105-5 |
| Fuels and Carburetion..... | TM 10-550 |
| Inspection of Ordnance Matériel in the Hands of Troops..... | TM 9-1100 |
| Lubrication Order..... | |
| Military Vehicles..... | TM 9-2800 |
| Motor Vehicles (Ordnance Corps Responsibility)..... | AR 700-105 |
| Ordnance Field Maintenance..... | FM 9-10 |
| Precautions in Handling Gasoline..... | AR 850-20 |
| Prevention of Motor Vehicle Accidents..... | SR 385-155-1 |
| Principles of Automotive Vehicles..... | TM 9-2700 |
| Report of Accident Experience..... | SR 385-10-40 |
| Storage Batteries, Lead-Acid Type..... | TM 9-2857 |
| Supplies and Equipment: Unsatisfactory Equipment Report..... | SR 700-45-5 |
| <i>e. Repair and Rebuild.</i> | |
| Abrasives, Cleaning, Preserving, Sealing, Adhesive, and Related Materials Issued for Ordnance Matériel..... | TM 9-850 |
| Body and Components of 2½ Ton 6 x 6 Water tank Truck M50, Gasoline Truck M49, and Tractor Truck M48..... | TM 9-1819D |
| Dump Body and Controls for 2½-Ton 6 x 6 Dump Truck M47..... | TM 9-1819C |
| Electrical Equipment (Bendix-Scintilla)..... | TM 9-1825E |
| Ordnance Maintenance: Engine (GMC Model 302)..... | TM 9-1819AA |
| Hand, Measuring, and Power Tools..... | TM 10-590 |
| Instruction Guide: Care and Maintenance of Ball and Roller Bearings..... | TM 37-265 |
| Lubrication..... | TM 9-2835 |
| Lubrication Order..... | LO 9-819A |
| Maintenance and Care of Hand Tools..... | TM 9-867 |
| Maintenance and Care of Pneumatic Tires and Rubber Treads..... | TM 31-200 |

| | |
|--|---------------|
| Maintenance of Supplies and Equipment: Maintenance Responsibilities and Shop Operation..... | AR 750-5 |
| Modification of Ordnance Matériel..... | SB 9-38 |
| Ordnance Maintenance: Carburetors (Holley)..... | TM 9-1826D |
| Ordnance Maintenance: Electrical Equipment (Auto-Lite)..... | TM 9-1825B |
| Ordnance Maintenance: Electrical Equipment (Delco-Remy)..... | TM 9-1825A |
| Ordnance Maintenance: Fuel Pumps..... | TM 9-1828A |
| Ordnance Maintenance: Power Brake Systems..... | TM 9-1827A |
| Ordnance Maintenance: Speedometers, Tachometers, and Recorders..... | TM 9-1829A |
| Ordnance Maintenance: Vacuum Brake System..... | TM 9-1827B |
| Ordnance Maintenance: Vehicular Maintenance Equipment, Grinding, Boring, Valve Reseating Machines, and Lathes..... | TM 9-1834A |
| Ordnance Maintenance, Hydra-Matic Transmission (GMC Model 302M)..... | TM 9-1819AB |
| Painting Instructions For Field Use..... | TM 9-2851 |
| Uneconomically Repairable Ordnance Vehicles..... | SR 755-105-5 |
| Power Train, Body, and Frame for 20½-Ton 6 x 6 Cargo Truck M34, M35, M36, M44, M45, M46, M47, M48, M49, M50, M108, and M109..... | TM 9-1819B |
| Preparation of Ordnance Matériel for Deep-Water Fording..... | TM 9-2853 |
| Preventive Maintenance of Electric Motors and Generators..... | TM 55-405 |
| Wheeled and Half-Track Vehicles, Trailers, and Towed Artillery: Lubrication of Wheel Bearings..... | TB 9-2835-12 |
| <i>f. Operation.</i> | |
| 2½-Ton 6 x 6 Cargo Truck M135..... | TM 9-819A |
| <i>g. Shipment and Stand-By or Long-Term Storage.</i> | |
| Army Shipping Document..... | TM 38-705 |
| Instruction Guide: Ordnance Packaging and Shipping (Posts, Camps, and Stations)..... | TM 9-2854 |
| Marking and Packing of Supplies and Equipment: | |
| Marking of Oversea Supply..... | SR 746-30-5 |
| Military Standard—Marking of Shipments..... | MIL-STD-129** |
| Ordnance Storage and Shipment Chart—Group G..... | TB 9-OSSC-G |
| Preparation of Supplies and Equipment for Shipment: | |
| Processing of Unboxed and Uncrated Equipment for Oversea Shipment..... | AR 747-30 |

**Copies may be obtained from Aberdeen Proving Ground, Aberdeen, Md.

| | |
|---|-------------|
| Processing of Motor Vehicles and Related Unboxed Matériel for Shipment and Storage..... | SB 9-4 |
| Preservation, Packaging, and Packing of Military Supplies and Equipment..... | TM 38-230 |
| Protection of Ordnance General Supplies in Open Storage..... | TB ORD 379 |
| Shipment of Supplies and Equipment: Report of Damaged or Improper Shipment..... | SR 745-45-5 |
| Standards for Oversea Shipment and Domestic Issue of Ordnance Matériel Other Than Ammunition and Army Aircraft..... | TB ORD 385 |

INDEX

Absorber, shock (*See* Shock absorber)

Accessory drive, power take-off:

| | <i>Paragraph</i> | <i>Page</i> |
|-------------------------------------|------------------|-------------|
| Description | 142 | 153 |
| Installation | 144 | 155 |
| Rebuild: | | |
| Dump truck accessory drive | 149-152 | 163 |
| Tank truck accessory drive | 145-148 | 155 |
| Removal | 143 | 154 |
| Standards, repair and rebuild | 345 | 407 |

Adjustments:

| | | |
|---|------|-----|
| Bearings, wheel | 256f | 291 |
| Drive gear and pinion backlash (axle) | 202g | 225 |
| Main spring seat bearing | 49 | 60 |
| Steering gear | 264 | 311 |
| Trunnion bearings, steering knuckle | 186d | 203 |
| Turning angle, front wheel | 155 | 174 |
| Ventilator, cowl | 328d | 383 |

Alinement:

| | | |
|------------------|-----|-----|
| Frame | 287 | 336 |
| Front axle | 155 | 174 |

Allocation, field and depot maintenance

2 14

Axle, front:

| | | |
|---|---------|-----|
| Alinement | 155 | 174 |
| Assembly of axle from subassemblies | 185-192 | 201 |
| Data | 154 | 173 |
| Data, alinement | 156 | 177 |
| Description and operation | 153 | 171 |
| Disassembly into subassemblies | 157-162 | 180 |
| Installation | 50 | 62 |
| Rebuild: | | |
| Axle shaft and universal joint | 164-169 | 183 |
| Housing | 174-179 | 194 |
| Steering knuckle, support, trunnions, seals, and bearings | 170-173 | 189 |
| Tie rod | 180-184 | 198 |
| Removal | 36 | 49 |
| Standards, repair and rebuild | 346 | 407 |

Axles, rear:

| | | |
|---|---------|-----|
| Assembly of axle from subassemblies | 205-209 | 230 |
| Cleaning and inspection of axle housing and axle shafts | 203-204 | 227 |
| Data | 194 | 209 |
| Description and operation | 193 | 209 |
| Disassembly of axle into subassemblies | 195-196 | 209 |
| Installation | 53 | 64 |
| Removal | 37 | 49 |

| | <i>Paragraph</i> | <i>Page</i> |
|--|------------------|-------------|
| Axle shaft and universal joint: | | |
| Assembly..... | 169 | 186 |
| Cleaning..... | 166 | 185 |
| Disassembly..... | 165 | 183 |
| Inspection..... | 167 | 185 |
| Installation..... | 190 | 207 |
| Removal..... | 159 | 180 |
| Repair..... | 168 | 186 |
| | 256 | 287 |
| Bearings, hub (wheel)..... | | |
| Block, pillow (<i>See</i> Pillow block) | | |
| Body, cargo (<i>See</i> Cargo body) | | |
| Brake drums..... | 235 | 265 |
| Brakes: | | |
| Parking: | | |
| Data..... | 243 | 272 |
| Description..... | 242 | 272 |
| Rebuild of mechanical parking brake..... | 244-246 | 273 |
| Rebuild of temporary (electric) parking brake valve..... | 247-252 | 278 |
| Standards, repair and rebuild..... | 351 | 414 |
| Service: | | |
| Assembly of brake components..... | 233 | 260 |
| Brake drums..... | 235 | 265 |
| Cleaning and inspection of brake components..... | 231 | 258 |
| Data..... | 227 | 251 |
| Description..... | 226 | 248 |
| Disassembly of brake components..... | 230 | 253 |
| Installation of brake assembly..... | 234 | 263 |
| Repair of brake components..... | 232 | 259 |
| Rebuild: | | |
| Brake shoes and drums..... | 228-235 | 251 |
| Master cylinder..... | 236-238 | 265 |
| Wheel cylinders..... | 239-241 | 270 |
| Removal of brake assembly..... | 229 | 252 |
| Standards, repair and rebuild..... | 348 | 412 |
| Bumper: | | |
| Front: | | |
| Installation..... | 74 | 80 |
| Removal..... | 17 | 29 |
| Rear: | | |
| Installation..... | 77 | 81 |
| Removal..... | 42 | 58 |
| Cab: | | |
| Data..... | 321 | 371 |
| Description..... | 320 | 370 |
| Door..... | 330-332 | 384 |
| Installation..... | 70 | 32 |
| Rebuild..... | 322-329 | 371 |
| Removal..... | 21 | 73 |
| Repair..... | 322 | 371 |
| Windshield..... | 333, 334 | 391 |
| Camber, front axle..... | 155 | 174 |
| Cargo body: | | |
| Data..... | 336 | 400 |
| Description..... | 335 | 395 |

| | <i>Paragraph</i> | <i>Page</i> |
|--|------------------|-------------|
| Cargo body—Continued | | |
| Installation..... | 79 | 82 |
| Patching and welding..... | 339 | 400 |
| Removal..... | 16 | 28 |
| Repair of top paulin and end curtain..... | 341 | 402 |
| Repair of wood parts..... | 340 | 401 |
| Straightening..... | 338 | 400 |
| Caster, front axle..... | 155 | 174 |
| Common tools and equipment..... | 9 | 20 |
| Connectors, bayonet type..... | 293 | 342 |
| Curtain: | | |
| End, cargo body..... | 341 | 402 |
| Rear, cab..... | 323 | 372 |
| Data: | | |
| Alinement, front axle..... | 156 | 177 |
| Axle, front..... | 154 | 173 |
| Axle, rear..... | 194 | 209 |
| Brakes: | | |
| Parking..... | 243 | 272 |
| Service..... | 227 | 251 |
| Cargo body..... | 336 | 400 |
| Frame..... | 285 | 334 |
| Power take-off..... | 122 | 137 |
| Spring suspension: | | |
| Front..... | 268 | 316 |
| Rear..... | 279 | 331 |
| Steering gear..... | 258 | 295 |
| Transfer..... | 82 | 89 |
| Wheels and hubs..... | 254 | 286 |
| Winch and drive line..... | 299 | 348 |
| Differences between models..... | 5 | 18 |
| Differential carrier: | | |
| Assembly..... | 202 | 221 |
| Cleaning..... | 199 | 216 |
| Disassembly..... | 198 | 211 |
| Inspection..... | 200 | 218 |
| Installation: | | |
| Front..... | 187 | 206 |
| Rear..... | 206 | 230 |
| Removal: | | |
| Front..... | 162 | 182 |
| Rear..... | 196e | 211 |
| Repair..... | 201 | 219 |
| Standards, repair and rebuild..... | 347 | 411 |
| Doors, cab: | | |
| General..... | 330 | 384 |
| Replacement of doors..... | 331 | 384 |
| Replacement of door components..... | 332 | 387 |
| Drag link: | | |
| Description..... | 265 | 314 |
| Inspection and repair..... | 266 | 314 |
| Drive line, winch (<i>See</i> Winch drive line) | 235 | 265 |
| Drum, brake..... | | |

| | <i>Paragraph</i> | <i>Page</i> |
|---|------------------|-------------|
| Electrical system: | 292 | 341 |
| Data | 291 | 341 |
| Description | 295-297 | 344 |
| Rebuild of horn | 293, 294 | 242 |
| Repair of cable connections | 3 | 15 |
| Forms, records, and reports | | |
| Frame: | 287 | 336 |
| Alinement | 285 | 334 |
| Data | 284 | 334 |
| Description | 289 | 339 |
| Rebuild of pintle | 288 | 337 |
| Repair | | |
| Front axle (<i>See Axle, front</i>) | | |
| Front spring suspension (<i>See Spring suspension, front</i>) | | |
| Fuel tank: | | |
| Installation | 76 | 80 |
| Removal | 23 | 40 |
| Gear, steering (<i>See Steering gear</i>) | | |
| Hood: | | |
| Installation | 72 | 78 |
| Removal | 19 | 30 |
| Horn: | | |
| Assembly | 297 | 344 |
| Description | 291b | 341 |
| Disassembly | 295 | 344 |
| Inspection | 296 | 344 |
| Housing: | | |
| Front axle: | | |
| Assembly | 179 | 197 |
| Cleaning | 176 | 194 |
| Disassembly | 175 | 194 |
| Inspection | 177 | 196 |
| Repair | 178 | 197 |
| Rear axle: | | |
| Cleaning | 203 | 227 |
| Inspection | 204 | 229 |
| Hubs (<i>See Wheels and hubs</i>) | | |
| Introduction: | | |
| Data | 6 | 19 |
| Description (of vehicles) | 4 | 16 |
| Differences between models | 5 | 18 |
| Field and depot maintenance allocation | 2 | 14 |
| Forms, records, and reports | 3 | 15 |
| Scope | 1 | 1 |
| Lining, brake shoe, replacement | 232 | 259 |
| Major components, removal, and installation: | | |
| Air-hydraulic cylinder: | | |
| Installation | 64 | 67 |
| Removal | 31 | 46 |
| Air reservoir: | | |
| Installation | 66 | 68 |
| Removal | 30 | 45 |

Major components, removal, and installation—Continued

| | <i>Paragraph</i> | <i>Page</i> |
|--|------------------|-------------|
| Axle, front: | | |
| Installation..... | 50 | 62 |
| Removal..... | 36 | 49 |
| Axles, rear: | | |
| Installation..... | 53 | 64 |
| Removal..... | 37 | 49 |
| Bumper, front: | | |
| Installation..... | 74 | 80 |
| Removal..... | 17 | 29 |
| Cab: | | |
| Installation..... | 70 | 73 |
| Removal..... | 21 | 32 |
| Cargo body: | | |
| Installation..... | 79 | 82 |
| Removal..... | 16 | 28 |
| Carrier, spare wheel: | | |
| Installation..... | 75 | 80 |
| Removal..... | 25 | 43 |
| Controls and brackets installation..... | 55-58 | 65 |
| Control shafts and brackets removal..... | 41 | 54 |
| Exhaust pipe, rear: | | |
| Installation..... | 69 | 73 |
| Removal..... | 24 | 42 |
| Fender and skirt: | | |
| Installation..... | 71 | 78 |
| Removal..... | 20 | 31 |
| Fuel tank: | | |
| Installation..... | 76 | 80 |
| Removal..... | 23 | 40 |
| General..... | 15, 44 | 28, 58 |
| Hood: | | |
| Installation..... | 72 | 78 |
| Removal..... | 19 | 30 |
| Inspection..... | 80 | 82 |
| Lines and wiring harnesses: | | |
| Installation..... | 45 | 58 |
| Removal..... | 43 | 58 |
| Main springs, rear: | | |
| Installation..... | 49 | 60 |
| Removal..... | 39 | 54 |
| Master cylinder: | | |
| Installation..... | 62 | 67 |
| Removal..... | 28 | 45 |
| Muffler: | | |
| Installation..... | 67 | 69 |
| Removal..... | 24 | 42 |
| Power plant: | | |
| Installation..... | 68 | 69 |
| Removal..... | 22 | 37 |
| Propeller shaft: | | |
| Installation..... | 59 | 66 |
| Removal..... | 32 | 46 |
| Rear bumpers, tow hooks, and pintle removal..... | 42 | 58 |

| | <i>Paragraph</i> | <i>Page</i> |
|--|------------------|-------------|
| Major components, removal, and installation—Continued | | |
| Rear tow hooks, bumpers, and pintle installation | 77 | 81 |
| Secondary spring: | | |
| Installation | 48 | 60 |
| Removal | 40 | 54 |
| Shock absorber: | | |
| Installation | 52 | 63 |
| Removal | 35 | 48 |
| Spare wheel and carrier: | | |
| Installation | 75 | 80 |
| Removal | 25 | 43 |
| Springs, front: | | |
| Installation | 47 | 59 |
| Removal | 38 | 53 |
| Steering gear: | | |
| Installation | 65 | 68 |
| Removal | 26 | 43 |
| Transfer: | | |
| Installation | 54 | 65 |
| Removal | 33 | 46 |
| Winch: | | |
| Installation | 73 | 79 |
| Removal | 18 | 29 |
| Winch drive line: | | |
| Installation | 61 | 66 |
| Removal | 29 | 45 |
| Wheel: | | |
| Installation | 60 | 66 |
| Removal | 34 | 48 |
| Master cylinder: | | |
| Assembly | 238 | 268 |
| Cleaning, inspection, and repair | 237 | 267 |
| Description | 226 <i>b</i> | 248 |
| Disassembly | 236 | 265 |
| Installation | 62 | 67 |
| Removal | 28 | 45 |
| Standards, repair and rebuild | 349 | 412 |
| Muffler: | | |
| Installation | 67 | 69 |
| Removal | 24 | 42 |
| Parts | 8 | 20 |
| Paulin top: | | |
| Cab | 323 | 372 |
| Cargo body | 341 | 402 |
| Pillow block: | | |
| Assembly | 225 | 246 |
| Cleaning, inspection, and repair | 224 | 241 |
| Description | 222 | 240 |
| Disassembly | 223 | 241 |
| Pintle: | | |
| Installation | 77 | 81 |
| Rebuild | 289 | 339 |
| Removal | 42 | 58 |

| | <i>Paragraph</i> | <i>Page</i> |
|---|------------------|-------------|
| Power plant: | | |
| Installation | 68 | 69 |
| Removal | 22 | 37 |
| Power take-off: | | |
| Accessory drive | 142-152 | 153 |
| Assembly | 136-141 | 145 |
| Data | 122 | 137 |
| Description | 121 | 133 |
| Disassembly | 123-128 | 137 |
| Rebuild of components | 129-135 | 143 |
| Standards, repair and rebuild | 344 | 407 |
| Propeller shafts and universal joints: | | |
| Arrangement of propeller shafts | 210 | 232 |
| Assembly | 217 | 236 |
| Cleaning | 216a | 234 |
| Description | 210-213 | 232 |
| Disassembly | 215 | 234 |
| Inspection | 216b | 234 |
| Installation | 59 | 66 |
| Removal | 32 | 46 |
| Propeller shaft, transmission-to-transfer: | | |
| Assembly | 221 | 240 |
| Cleaning, inspection, and repair | 220 | 237 |
| Description | 218 | 237 |
| Disassembly | 219 | 237 |
| Rear axle (<i>See Axles, rear</i>) | | |
| Rear spring suspension (<i>See Spring suspension, rear</i>) | | |
| Riveting (frame) | 288d | 338 |
| Scope (of manual) | 1 | 1 |
| Seats, cab | 324 | 375 |
| Shaft, propeller (<i>See Propeller shafts and universal joints</i>) | | |
| Sheet metal | 329 | 384 |
| Special tools and equipment | 10 | 20 |
| Specifications, torque wrench | 357 | 422 |
| Spring suspension: | | |
| Front: | | |
| Description | 267 | 315 |
| Inspection | 269 | 316 |
| Repair | 270-272 | 317 |
| Shock absorbers | 273-277 | 321 |
| Spring installation | 47 | 59 |
| Spring removal | 38 | 53 |
| Standards, repair and rebuild | 354 | 418 |
| Rear: | 279 | 331 |
| Data | 278 | 329 |
| Description | 281 | 332 |
| Inspection | | |
| Main spring: | | |
| Installation | 49 | 60 |
| Removal | 39 | 54 |
| Repair | 282 | 332 |
| Secondary spring: | | |
| Installation | 48 | 60 |
| Removal | 40 | 54 |

| | <i>Paragraph</i> | <i>Page</i> |
|---------------------------------------|------------------|-------------|
| Spring suspension—Continued | | |
| Rear—Continued | | |
| Spring seat shaft replacement | 283 | 332 |
| Shock absorbers: | | |
| Assembly | 277 | 326 |
| Cleaning and inspection | 276 | 324 |
| Construction | 273 | 321 |
| Disassembly | 275 | 323 |
| Installation | 52 | 63 |
| Operation | 274 | 322 |
| Removal | 35 | 48 |
| Standard, repair and rebuild: | | |
| Accessory drive, power take-off | 345 | 407 |
| Axle, front | 346 | 407 |
| Brake, parking: | | |
| Electric | 352 | 415 |
| Mechanical | 351 | 414 |
| Brakes, service | 348 | 412 |
| Differential, axle | 347 | 411 |
| Master cylinder | 349 | 412 |
| Power take-off | 344 | 407 |
| Spring suspension, front | 354 | 418 |
| Steering gear | 353 | 415 |
| Torque wrench specifications | 357 | 422 |
| Transfer | 343 | 403 |
| Wheel cylinders | 350 | 412 |
| Winch | 355 | 418 |
| Winch drive line | 356 | 418 |
| Steering gear: | | |
| Adjustments | 264 | 311 |
| Assembly | 263 | 306 |
| Cleaning | 261 | 301 |
| Data | 258 | 295 |
| Description | 257 | 293 |
| Disassembly | 268 | 316 |
| Inspection and repair | 262 | 301 |
| Installation | 65 | 68 |
| Removal | 26 | 43 |
| Standards, repair and rebuild | 353 | 415 |
| Steering knuckle support: | | |
| Bearing adjustment | 186 <i>d</i> | 203 |
| Inspection | 172 | 189 |
| Installation | 186 <i>e</i> | 203 |
| Removal | 161 | 182 |
| Repair | 173 | 191 |
| Steering wheel: | | |
| Installation | 263 <i>k</i> | 311 |
| Removal | 259 <i>c</i> | 296 |
| Tank, fuel: | | |
| Installation | 76 | 80 |
| Removal | 23 | 40 |
| Tie rod, front axle: | | |
| Assembly | 184 | 200 |
| Cleaning | 182 | 200 |

Tie rod, front axle—Continued

| | <i>Paragraph</i> | <i>Page</i> |
|--|------------------|-------------|
| Disassembly..... | 181 | 200 |
| Installation..... | 189 | 206 |
| Inspection..... | 183 | 200 |
| Removal..... | 160 | 182 |
| Tools: | | |
| Common..... | 9 | 20 |
| Special..... | 10 | 20 |
| Torque rods: | | |
| Front: | | |
| Description..... | 267c | 315 |
| Inspection..... | 269g | 317 |
| Repair..... | 272 | 320 |
| Rear: | | |
| Description..... | 278d | 321 |
| Inspection..... | 281c | 332 |
| Torque wrench specification..... | 357 | 422 |
| Transfer: | | |
| Assembly of transfer from subassemblies..... | 114-120 | 126 |
| Data..... | 82 | 89 |
| Description..... | 81 | 84 |
| Disassembly into subassemblies..... | 83-91 | 89 |
| Installation..... | 54 | 65 |
| Rebuild: | | |
| Case and covers..... | 112, 113 | 125 |
| Forward rear axle output shaft components..... | 104-106 | 115 |
| Front axle output shaft components..... | 101-103 | 110 |
| Idler shaft components..... | 107-109 | 118 |
| Input shaft and components..... | 92-94 | 99 |
| Output gear bearing retainer and components..... | 98-100 | 107 |
| Output gear and components..... | 95-97 | 103 |
| Shifting mechanism..... | 110, 111 | 123 |
| Removal..... | 33 | 46 |
| Standards, repair and rebuild..... | 343 | 403 |
| Trouble shooting: | | |
| Bent brake backing plate..... | 14 | 27 |
| Excessive front axle caster..... | 12 | 27 |
| Incorrect front wheel alignment..... | 13 | 27 |
| Purpose..... | 11 | 27 |
| Turning angle, front wheel..... | 155 | 174 |
| Universal joint (<i>See Propeller shafts and universal joints</i>) | | |
| Valve, electric parking brake: | | |
| Assembly..... | 252 | 281 |
| Cleaning and inspection..... | 251 | 280 |
| Disassembly..... | 250 | 280 |
| Operation..... | 248 | 278 |
| Standards, repair and rebuild..... | 352 | 415 |
| Testing..... | 249 | 280 |
| Welding: | | |
| Cargo body..... | 339 | 400 |
| Frame..... | 288e | 338 |

| | <i>Paragraph</i> | <i>Page</i> |
|---|------------------|-------------|
| Wheel cylinders: | | |
| Assembly..... | 241 | 270 |
| Cleaning, inspection, and repair..... | 240 | 270 |
| Description..... | 226 <i>d</i> | 249 |
| Disassembly..... | 239 | 270 |
| Standards, repair and rebuild..... | 350 | 412 |
| Wheels: | 60 | 66 |
| Installation..... | 34 | 48 |
| Removal..... | | |
| Wheels and hubs: | | |
| Bearing adjustment..... | 256 <i>f</i> | 291 |
| Data..... | 254 | 286 |
| Description..... | 253 | 283 |
| Hubs and bearings, rebuild..... | 256 | 287 |
| Wheels, rebuild..... | 255 | 286 |
| Winch: | | |
| Assembly of winch from subassemblies..... | 313-315 | 362 |
| Data..... | 299 | 348 |
| Description..... | 298 | 346 |
| Disassembly into subassemblies..... | 300-302 | 348 |
| Installation..... | 73 | 79 |
| Rebuild: | | |
| Drive system..... | 316-319 | 365 |
| Drum..... | 311, 312 | 362 |
| End frame..... | 303-305 | 352 |
| Gear case and automatic brake..... | 306-310 | 355 |
| Removal..... | 18 | 29 |
| Standards, repair and rebuild..... | 355 | 418 |
| Winch drive system: | | |
| Installation..... | 61 | 66 |
| Rebuild..... | 316-319 | 365 |
| Removal..... | 29 | 45 |
| Standards, repair and rebuild..... | 356 | 418 |
| Windshield: | | |
| General..... | 333 | 391 |
| Replacement of windshield components..... | 334 | 391 |
| Wrench, torque, specifications..... | 357 | 422 |



