

INCHES	CM
7-7/8	20
9	22.9
19-1/8	48.6
31-13/16	80.8
33-7/16	84.9
46-3/8	117.8
49-15/16	126.8
51	129.5
58-1/2	148.6
64	162.6
70	177.8
73-13/16	187.5
79-1/2	201.9
98	248.9
98-1/4	249.6
131	332.7
210-1/4	534

NOTES:

1. DIMENSIONS ARE IN INCHES AND ARE SHOWN FOR ENGINEERING REFERENCE ONLY.
2. REFERENCED DOCUMENTS SHALL BE OF THE ISSUE IN EFFECT ON DATE OF INVITATIONS FOR BID.
3. THIS VEHICLE SHALL BE IN ACCORDANCE WITH REFERENCED ENGINEERING DRAWINGS, COPIES WHICH MAY BE OBTAINED FROM: US ARMY-AUTOMOTIVE COMMAND, WARREN, MICH. 48090.

Ⓐ ENTIRE STANDARD REVISED

MS PART NO.	ENGINEERING DRAWING NO.
MS52137-1	8736960

P.A. ARMY-AT Other Cust	TITLE TRUCK, CARGO, 1 1/4 TON, 131 IN. WHEEL BASE, M 880 4x4 (COMMERCIAL)	MILITARY STANDARD
		MS52137(AT)
PROCUREMENT SPECIFICATION MIL-T-62188	SUPERSEDES:	SHEET 1 OF 4

This military standard is approved for use by the US Army Tank-Automotive Command, Department of the Army, and is available for use by all Departments and Agencies of the Department of Defense.
DISTRIBUTION STATEMENT A. Approved for public release; distribution is unlimited.

APPROVED 26 AUG 1977 REVISED Ⓐ 20 MAY 85

VEHICLE CHARACTERISTICS

<u>WEIGHTS:</u>		<u>OIL FILTER:</u>	
CURB	4648	TYPE	FULL FLOW
PAYLOAD (INCLUDING THREE MEN)	3100	CAPACITY	1 PT
GVWR	8000		
<u>DISTRIBUTION:</u>		<u>FUEL SYSTEM:</u>	
EMPTY FRONT	2727	NUMBER OF TANKS	1
EMPTY REAR (CURB)	1921	CAPACITY	20 GALS
LOADED FRONT	3190	LOCATION	MID-SHIP
LOADED REAR	4558		INBOARD OF FRAME RAILS
<u>TOWED LOAD:</u> LOADED	3000	<u>AIR CLEANER:</u>	PAPER
<u>TURNING RADIUS:</u>	576 IN	<u>TRANSMISSION:</u>	AUTOMATIC
<u>DIMENSIONS:</u>		<u>REDUCTIONS:</u>	
FRAME	6-3/16 X 2-5/16 X 3/16	FORWARD	2.45/1.45/1.00
FRAME, MAX SECTION MODULUS	3.88 IN ²	REVERSE	2.20
		INPUT TORQUE	615 LB FT
		OIL	19 PTS
<u>ENGINE:</u>		<u>CONVERTER:</u>	
FUEL, GASOLINE	LEADED/NON-LEADED	SIZE	11-3/4 DIA
FUEL, OCTANE	83/91 (M/R) MIN	STALL RATIO	2.07
CYLINDERS	8		
PISTON DISPLACEMENT	318.3 CU IN	<u>TRANSFER CASE:</u>	
BORE	3.91	SPEEDS	2
STROKE	3.31	REDUCTIONS	2.01/1.00
HORSEPOWER, NET AT 4000 RPM	150		
MAX NET TORQUE AT 2400 RPM	230 LB FT	<u>INPUT TORQUE:</u>	
<u>CARBURETOR:</u>	BDD-2BBL	HIGH RANGE	2000 LB FT
<u>FUEL PUMP:</u>	MS6449S	LOW RANGE	1000 LB FT
<u>COOLING SYSTEM:</u>	18 QTS	OIL	9 PTS
<u>LUBRICATION SYSTEM:</u>		<u>PROPELLER SHAFTS:</u>	
ENGINE OIL	5 QTS IN PAN	INPUT TORQUE	FRONT 1990 LB FT REAR 3330 LB FT
<u>AXLES:</u>		<u>MASTER CYLINDER:</u>	
FRONT LOAD RATING	3500 LBS	SIZE	TANDEM 1-1/8 X 1-5/16
TYPE	FULL FLOAT	<u>WHEEL CYLINDER SIZE:</u>	
INPUT TORQUE	268 LB FT	FRONT	3-1/8
OIL	4 PTS	REAR	1
REAR LOAD RATING	5500 LBS	<u>POWER BOOSTER:</u>	TANDEM DIAPHRAGM 8-13/16 OD
TYPE	FULL FLOAT	<u>PARKING BRAKE:</u>	INTERNAL - EXPANDING
INPUT TORQUE CAPACITY	365 LB FT	SIZE	2-1/2
OIL	6 PTS	<u>ELECTRICAL:</u>	12 VOLTS
AXLE RATIO	4.10 TO 1	GROUND	NEGATIVE
AXLE SHAFT		<u>ALTERNATOR:</u>	
MIN DIAMETER	1-3/16	CAPACITY	50 AMP
SPLINE DIAMETER	1-5/16	CAPACITY AT IDLE	55 AMPS @ 14 VOLTS 34 AMPS
<u>SPRINGS:</u>		<u>STARTER:</u>	1-1/2 H P
FRONT LOAD RATING	1550/1800 LBS	<u>VOLTAGE REGULATOR:</u>	3 AMP
TYPE	MULTI-LEAF SYMMETRICAL	<u>BATTERY:</u>	80 AMP HR @ 20 HR RATE
REAR LOAD RATING	2200/2450	<u>DIRECTIONAL SIGNALS:</u>	CLASS A
TYPE	MULTI-LEAF ASYMMETRICAL	<u>WINDSHIELD WIPER:</u>	DUAL, ELECTRIC 12 VOLT, 2 SPEED
<u>SHOCK ABSORBERS:</u>		<u>HORN:</u>	ELECTRIC 12 VOLT
TYPE	1-3/8 IN DIA	<u>PINTLE HOOK:</u>	8380198
DOUBLE ACTION		<u>BODY:</u>	458 LBS
<u>WHEELS:</u>		FLOOR MATERIAL	STEEL, CR 0.052 THICK
TYPE	DROP CENTER RIM		
RIM SIZE	16-1/2 X 6-3/4		
<u>TIRES: (TUBELESS)</u>			
SIZE	9-1/2 OR 16-1/2 D		
TREAD DESIGN	ON & OFF HIGHWAY		
PLY	8		
<u>BRAKES:</u>			
FRONT	HYDRAULIC		
REAR	3-1/8 DISC		
LINING AREA: FRONT &	12 X 2-1/2 DRUM		
REAR	41-11/16 SQ IN		
LINING THICKNESS	122-11/16 SQ IN		
FRONT - OUTER	7/16		
REAR - PRIMARY	3/16		
	INNER 1/2		
	SECONDARY 1/4		

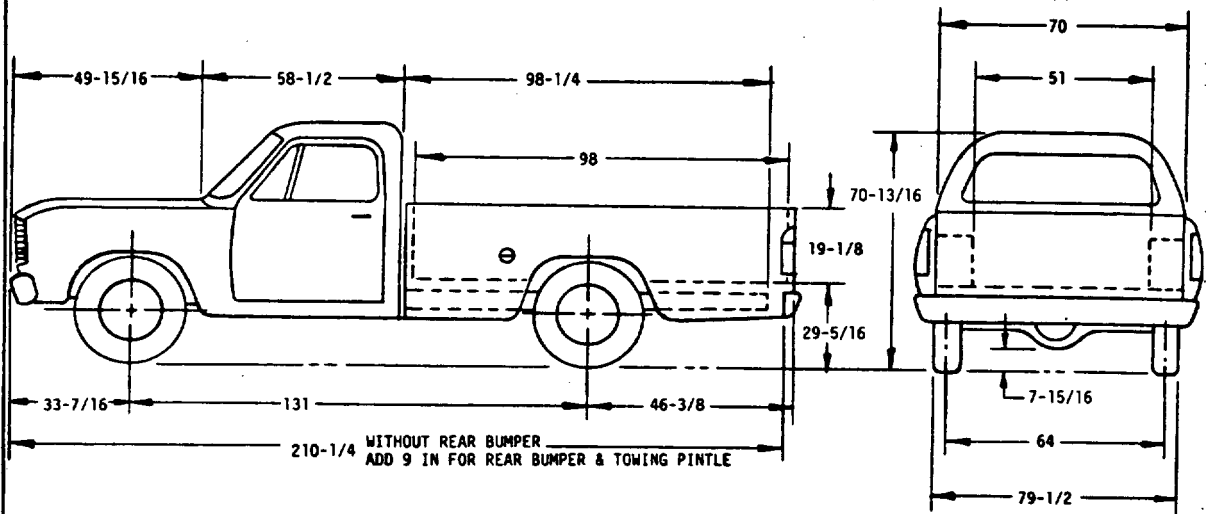
(A) ENTIRE STANDARD REVISED

MS PART NO.	ENGINEERING DRAWING NO.
MS52137-1	8736960

P.A. ARMY-AT Other Cust	TITLE TRUCK, CARGO, 1 1/4 TON, 131 IN. WHEEL BASE, M 880 4x4 (COMMERCIAL)	MILITARY STANDARD MS52137(AT)
PROCUREMENT SPECIFICATION MIL-T-62188	SUPERSEDES:	SHEET 2 OF 4

This military standard is approved for use by the US Army Tank-Automotive Command, Department of the Army, and is available for use by all Departments and Agencies of the Department of Defense.
DISTRIBUTION STATEMENT A. Approved for public release; distribution is unlimited.

APPROVED 26 Aug 1977 REVISED (A) 20 MAY 85



INCHES	CM
7-15/16	20.2
9	22.9
19-1/8	48.6
29-5/16	74.5
33-7/16	84.9
46-3/8	117.8
49-15/16	126.8
51	129.5
58-1/2	148.6
64	162.6
70	177.8
70-13/16	179.9
79-1/2	201.9
98	248.9
98-1/4	249.6
131	332.7
210-1/4	534

NOTES:

1. DIMENSIONS ARE IN INCHES AND ARE SHOWN FOR ENGINEERING REFERENCE ONLY.
2. REFERENCED DOCUMENTS SHALL BE OF THE ISSUE IN EFFECT ON DATE OF INVITATIONS FOR BJD.
3. THIS VEHICLE SHALL BE IN ACCORDANCE WITH REFERENCED ENGINEERING DRAWINGS, COPIES WHICH MAY BE OBTAINED FROM: US ARMY-AUTOMOTIVE COMMAND, WARREN, MICH. 48090.

(A) ENTIRE STANDARD REVISED

MS PART NO.	ENGINEERING DRAWING NO.
MS52137-2	8736961

P.A. ARMY-AT Other Cust	TITLE TRUCK, CARGO, 1 1/4 TON, 131 IN. WHEEL BASE, M890 4x2 (COMMERCIAL)	MILITARY STANDARD
		MS52137(AT)
PROCUREMENT SPECIFICATION MIL-T-62188	SUPERSEDES:	SHEET 3 OF 4

This military standard is approved for use by the US Army Tank-Automotive Command, Department of the Army, and is available for use by all Departments and Agencies of the Department of Defense. DISTRIBUTION STATEMENT A. Approved for public release; distribution is unlimited.

APPROVED 26 Aug 1977 REVISED (A) 20 MAY 85

VEHICLE CHARACTERISTICS

WEIGHTS:
CURB 4217
PAYLOAD (INCLUDING THREE MEN) 3100
GVWR 7500

DISTRIBUTION:
EMPTY FRONT (CURB) 2363
EMPTY REAR (CURB) 1854
LOADED FRONT 2826
LOADED REAR 4491

TOWED LOAD: LOADED 3000

TURNING RADIUS: 576 IN

DIMENSIONS:
FRAME 6-3/16 X 2-5/16 X 3/16
FRAME, MAX SECTION MODULUS 3.88 IN³

ENGINE:
FUEL, GASOLINE LEADED/NON-LEADED
FUEL, OCTANE 83/91 (M/R) MIN
CYLINDERS 8
PISTON DISPLACEMENT 318.3 CU IN
BORE 3.91
STROKE 3.31
HORSEPOWER, NET AT 4000 RPM 150
MAX NET TORQUE AT 2400 RPM 230 LB FT

CARBURETOR: 8BD-2BBL

FUEL PUMP: MS6449S

AXLES:
FRONT LOAD RATING 3300 LBS
TYPE FULL FLOAT
INPUT TORQUE N/A
OIL N/A
REAR LOAD RATING 5500 LBS
TYPE FULL FLOAT
INPUT TORQUE CAPACITY 365 LB FT
OIL 6 PTS
AXLE RATIO 4.10 TO 1
AXLE SHAFT
MIN DIAMETER 1-3/16
SPLINE DIAMETER 1-5/16

SPRINGS:
FRONT TYPE COIL
MODEL-3492935 MECHANICAL SPRING
LOAD RATING 1475/1645 LBS
REAR TYPE MULTI-LEAF UNSYMMETRICAL
LOAD RATING 2500/2725

SHOCK ABSORBERS:
TYPE 1-3/8 IN DIA DOUBLE ACTION

WHEELS:
TYPE DROP CENTER RIM
RIM SIZE 16.5 X 6.75

TIRES: (TUBLESS)
SIZE 9-1/2 X OR 16-1/2 D
TREAD DESIGN ON & OFF HIGHWAY
PLY RATING 8

BRAKES: HYDRAULIC
FRONT 3-1/8 DISC
REAR 12 X 2-1/2 DRUM
LINING AREA FRONT & REAR 41-11/16
122-11/16
LINING THICKNESS
FRONT - OUTER 7/16 INNER 1/2
REAR - PRIMARY 3/16 SECONDARY 1/2

COOLING SYSTEM: 18 QTS

LUBRICATION SYSTEM:
ENGINE OIL 5 QTS IN PAN

OIL FILTER:
TYPE FULL FLOW
CAPACITY 1 PINT

FUEL SYSTEM:
NUMBER OF TANKS 1
CAPACITY 20 GALS
LOCATION MID-SHIP INBOARD OF FRAME RAILS

AIR CLEANER: PAPER

TRANSMISSION: AUTOMATIC

REDUCTIONS:
FORWARD 2.45/1.45/1.00
REVERSE 2.20
INPUT TORQUE CAPACITY 615 LB FT
OIL 19 PTS

CONVERTER:
SIZE 11-3/4 DIA
STALL RATIO 2.07

MASTER CYLINDER: TANDEM
SIZE 1-1/8 X 1-5/16

WHEEL CYLINDER SIZE:
FRONT 3-1/8
REAR 1

POWER BOOSTER: TANDEM DIAPHRAGM 8-13/16 00

PARKING BRAKE:
TYPE INTERNAL- EXPANDING
SIZE 12 X 2-1/2

ELECTRICAL:
GROUND 12 VOLTS
NEGATIVE

ALTERNATOR: 50 AMP
CAPACITY 55 AMPS @ 14 VOLTS
CAPACITY AT IDLE 34 AMPS

STARTER: 1.5 H P

VOLTAGE REGULATOR 3 AMP

BATTERY: 80 AMP HR @ 20 HR RATE

DIRECTIONAL SIGNALS: CLASS A

WINDSHIELD WIPER: DUAL, ELECTRIC 12 VOLT,
2 SPEED

HORN: ELECTRIC 12 VOLT

PINTLE HOOK: 8380198

BODY:
WEIGHT 458 LBS
FLOOR MATERIAL STEEL, CR 0.052 THICK

(A) ENTIRE STANDARD REVISED

MS PART NO.	ENGINEERING DRAWING NO.
MS52137-2	8736961

P.A. ARMY-AT Other Cust	TITLE TRUCK, CARGO, 1 1/4 TON, 131 IN. WHEEL BASE, M890 4x2 (COMMERCIAL)	MILITARY STANDARD MS52137(AT)
PROCUREMENT SPECIFICATION MIL-T-62188	SUPERSEDES:	SHEET 4 OF 4

This military standard is approved for use by the US Army Tank-Automotive Command, Department of the Army, and is available for use by all Departments and Agencies of the Department of Defense.
DISTRIBUTION STATEMENT A. Approved for public release; distribution is unlimited.

APPROVED 26 Aug 1977 REVISED (A) 20 MAY 85